



Juniper Analytics LLC

1334 NE 2nd St
Bend, OR
(541) 382-3796
<http://www.juniperanalyticsllc.com>
ORELAP: License # 10035537931

Pangaea Organics LLC

La Pine, OR 97739
(541) 213-8824
Lic. #030-1003665D56A



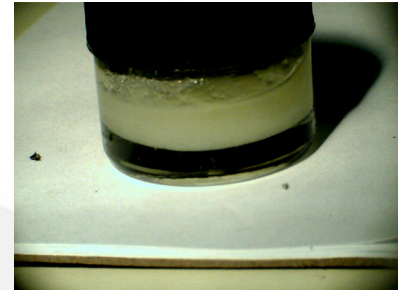
Sample: 20JA0875.01

Concentrate/Extract - Full Compliance Post
Control Study - CAN, PES-R, SOL-R,
Concentrate/Extract Terpenes - TER

Report Date: 5/27/2020
Intake Date: 05/22/2020
Harvest/Prod. Date: 05/14/2020

Citrus ICE

Strain: Citrus ICE
METRC Sample: 1A40103000163DD000006370; METRC Batch #: 6369;
External Batch #: 6369



66.864%

Total THC %

<LOQ

Total CBD %

668.64 mg/g

Total THC mg/g

<LOQ

Total CBD mg/g

Pesticides

Pass

Residual Solvents

Pass

METRC OR Potency

Pass

Post Control Study

THC % RPD Status: Pass

THC % RPD Value: 0.11%

CBD % RPD Value: N/A

See attached sheets for details

This product has been tested by Juniper Analytics LLC, using valid testing methodologies and a quality system as required by state law. Values reported relate only to the product tested and batched under the batch number identified above. Juniper Analytics LLC makes no claims as to the efficacy, safety, or other risks associated with any detected or non-detected level of any compounds reported herein. This Certificate must not be altered, and shall not be reproduced except in full, without the written approval of Juniper Analytics LLC.

Ben Armstrong
QA Review

Confident Cannabis
All Rights Reserved
support@confidentcannabis.com
(866) 506-5866
www.confidentcannabis.com





Juniper Analytics LLC
1334 NE 2nd St
Bend, OR
(541) 382-3796
<http://www.juniperanalyticsllc.com>
ORELAP: License # 10035537931

Pangaea Organics LLC

La Pine, OR 97739
(541) 213-8824
Lic. #030-1003665D56A



Sample: 20JA0875.01

Concentrate/Extract - Full Compliance Post
Control Study - CAN, PES-R, SOL-R,
Concentrate/Extract Terpenes - TER

Report Date: 5/27/2020
Intake Date: 05/22/2020
Harvest/Prod. Date: 05/14/2020
Potency Analysis Date: 05/26/2020

Citrus ICE

Strain: Citrus ICE
METRC Sample: 1A40103000163DD000006370; METRC Batch #: 6369;
External Batch #: 6369; Analytical Batch #: PO-2020-05-22-01



Cannabinoid Profile

66.864%
Total THC
668.64 mg/g
Total THC mg/g

<LOQ
Total CBD
<LOQ
Total CBD mg/g

Analyte	LOQ mg/g	Mass %	Mass mg/g
THCa	1.860	75.396	753.96
Δ9-THC	1.860	0.742	7.42
Δ8-THC	1.860	<LOQ	<LOQ
THCV	1.860	<LOQ	<LOQ
CBDa	1.860	<LOQ	<LOQ
CBD	1.860	<LOQ	<LOQ
CBN	1.860	<LOQ	<LOQ
CBGa	1.860	<LOQ	<LOQ
CBG	1.860	<LOQ	<LOQ
CBC	1.860	<LOQ	<LOQ
Total		76.138	761.38

QC Batch ID: PO-2020-05-22-01
Total THC = THCa * 0.877 + Δ9-THC
Total CBD = CBDa * 0.877 + CBD

Instrument: HPLC/DAD; Method: JA-Potency-Proprietary; LOQ = Limit of Quantitation; The reported result is based on a sample weight with the applicable moisture content for that sample; Unless otherwise stated all quality control samples performed within specifications established by the Laboratory. Potency Analysis (Oregon Compliance Standard OAR 333-007-0430).

Ben Armstrong
QA Review

Confident Cannabis
All Rights Reserved
support@confidentcannabis.com
(866) 506-5866
www.confidentcannabis.com





Juniper Analytics LLC

1334 NE 2nd St
Bend, OR
(541) 382-3796
<http://www.juniperanalyticsllc.com>
ORELAP: License # 10035537931

Pangaea Organics LLC

La Pine, OR 97739
(541) 213-8824
Lic. #030-1003665D56A



Sample: 20JA0875.01

Concentrate/Extract - Full Compliance Post
Control Study - CAN, PES-R, SOL-R,
Concentrate/Extract Terpenes - TER

Report Date: 5/27/2020
Intake Date: 05/22/2020
Harvest/Prod. Date: 05/14/2020
Terpenes Analysis Date: 05/26/2020

Citrus ICE

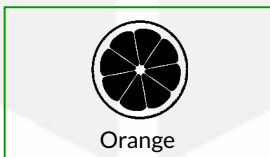
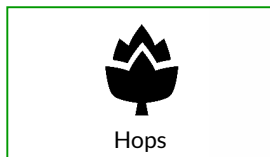
Strain: Citrus ICE

METRC Sample: 1A40103000163DD000006370; METRC Batch #: 6369;

External Batch #: 6369; Analytical Batch #:

Terpenes

Analyte	LOQ	Mass	Mass		Analyte	LOQ	Mass	Mass
	mg/g	mg/g	%			mg/g	mg/g	%
β-Myrcene	0.01	53.11	5.311	<div style="width: 100%;"></div>	Cedrol	0.01	<LOQ	<LOQ
β-Caryophyllene	0.01	23.21	2.321	<div style="width: 45%;"></div>	cis-Nerolidol	0.01	<LOQ	<LOQ
δ-Limonene	0.01	20.21	2.021	<div style="width: 40%;"></div>	Eucalyptol	0.01	<LOQ	<LOQ
Terpinolene	0.01	15.02	1.502	<div style="width: 30%;"></div>	Fenchol	0.01	<LOQ	<LOQ
α-Humulene	0.01	6.79	0.679	<div style="width: 15%;"></div>	Fenchone	0.01	<LOQ	<LOQ
α-Pinene	0.01	6.16	0.616	<div style="width: 15%;"></div>	γ-Terpineol	0.01	<LOQ	<LOQ
β-Pinene	0.01	4.43	0.443	<div style="width: 10%;"></div>	Geraniol	0.01	<LOQ	<LOQ
cis-Ocimene	0.01	0.60	0.060		Geranyl Acetate	0.01	<LOQ	<LOQ
Camphene	0.01	0.58	0.058		Guaiol	0.01	<LOQ	<LOQ
α-Phellandrene	0.01	0.55	0.055		Isoborneol	0.01	<LOQ	<LOQ
γ-Terpinene	0.01	0.47	0.047		Linalool	0.01	<LOQ	<LOQ
δ-3-Carene	0.01	0.43	0.043		Menthhol	0.01	<LOQ	<LOQ
α-Terpinene	0.01	0.38	0.038		Nerol	0.01	<LOQ	<LOQ
β-Ocimene	0.01	0.32	0.032		Ocimene	0.01	<LOQ	<LOQ
Isopulegol	0.01	0.21	0.021		(+)-Pulegone	0.01	<LOQ	<LOQ
α-Bisabolol	0.01	<LOQ	<LOQ		p-Cymene	0.01	<LOQ	<LOQ
α-Cedrene	0.01	<LOQ	<LOQ		Sabinene	0.01	<LOQ	<LOQ
α-Terpineol	0.01	<LOQ	<LOQ		Sabinene Hydrate	0.01	<LOQ	<LOQ
Borneol	0.01	<LOQ	<LOQ		trans-Nerolidol	0.01	<LOQ	<LOQ
Camphor	0.01	<LOQ	<LOQ		Valencene	0.01	<LOQ	<LOQ
Caryophyllene Oxide	0.01	<LOQ	<LOQ		Total		132.47	13.247



Instrument: GC/MS; Method: JA-Terpene-Proprietary; LOQ = Limit of Quantitation; Unless otherwise stated all quality control samples performed within specifications established by the Laboratory.

Ben Armstrong

Ben Armstrong
QA Review

Confident Cannabis
All Rights Reserved
support@confidentcannabis.com
(866) 506-5866
www.confidentcannabis.com





Juniper Analytics LLC
1334 NE 2nd St
Bend, OR
(541) 382-3796
<http://www.juniperanalyticsllc.com>
ORELAP: License # 10035537931

Pangaea Organics LLC

La Pine, OR 97739
(541) 213-8824
Lic. #030-1003665D56A



Sample: 20JA0875.01

Concentrate/Extract - Full Compliance Post
Control Study - CAN, PES-R, SOL-R,
Concentrate/Extract Terpenes - TER

Report Date: 5/27/2020
Intake Date: 05/22/2020
Harvest/Prod. Date: 05/14/2020
Pesticides Analysis Date: 05/27/2020

Citrus ICE

Strain: Citrus ICE
METRC Sample: 1A40103000163DD000006370; METRC Batch #: 6369;
External Batch #: 6369; Analytical Batch #: Pest-2020-05-22-01

Pesticides

Pass

Analyte	LOQ	Limit	Results	Status	Analyte	LOQ	Limit	Results	Status
	PPM	PPM	PPM			PPM	PPM	PPM	
Abamectin	0.25	0.50	<LOQ	Pass	Imazalil	0.10	0.20	<LOQ	Pass
Acephate	0.20	0.40	<LOQ	Pass	Imidacloprid	0.20	0.40	<LOQ	Pass
Acequinocyl	1.00	2.00	<LOQ	Pass	Kresoxim Methyl	0.20	0.40	<LOQ	Pass
Acetamiprid	0.10	0.20	<LOQ	Pass	Malathion	0.10	0.20	<LOQ	Pass
Aldicarb	0.20	0.40	<LOQ	Pass	Metalaxyl	0.10	0.20	<LOQ	Pass
Azoxystrobin	0.10	0.20	<LOQ	Pass	Methiocarb	0.10	0.20	<LOQ	Pass
Bifenazate	0.10	0.20	<LOQ	Pass	Methomyl	0.20	0.40	<LOQ	Pass
Bifenthrin	0.10	0.20	<LOQ	Pass	Methyl Parathion	0.10	0.20	<LOQ	Pass
Boscalid	0.20	0.40	<LOQ	Pass	MGK-264	0.10	0.20	<LOQ	Pass
Carbaryl	0.10	0.20	<LOQ	Pass	Myclobutanil	0.10	0.20	<LOQ	Pass
Carbofuran	0.10	0.20	<LOQ	Pass	Naled	0.25	0.50	<LOQ	Pass
Chlorantraniliprole	0.10	0.20	<LOQ	Pass	Oxamyl	0.50	1.00	<LOQ	Pass
Chlorfenapyr	0.50	1.00	<LOQ	Pass	Paclbutrazol	0.20	0.40	<LOQ	Pass
Chlorpyrifos	0.10	0.20	<LOQ	Pass	Permethrins	0.10	0.20	<LOQ	Pass
Clofentezine	0.10	0.20	<LOQ	Pass	Phosmet	0.10	0.20	<LOQ	Pass
Cyfluthrin	0.50	1.00	<LOQ	Pass	Piperonyl Butoxide	1.00	2.00	<LOQ	Pass
Cypermethrin	0.50	1.00	<LOQ	Pass	Prallethrin	0.10	0.20	<LOQ	Pass
Daminozide	0.50	1.00	<LOQ	Pass	Propiconazole	0.20	0.40	<LOQ	Pass
DDVP	0.50	1.00	<LOQ	Pass	Propoxur	0.10	0.20	<LOQ	Pass
Diazinon	0.10	0.20	<LOQ	Pass	Pyrethrins	0.50	1.00	<LOQ	Pass
Dimethoate	0.10	0.20	<LOQ	Pass	Pyridaben	0.10	0.20	<LOQ	Pass
Ethoprophos	0.10	0.20	<LOQ	Pass	Spinosad	0.10	0.20	<LOQ	Pass
Etofenprox	0.20	0.40	<LOQ	Pass	Spiromesifen	0.10	0.20	<LOQ	Pass
Etoxazole	0.10	0.20	<LOQ	Pass	Spirotetramat	0.10	0.20	<LOQ	Pass
Fenoxycarb	0.10	0.20	<LOQ	Pass	Spiroxamine	0.20	0.40	<LOQ	Pass
Fenpyroximate	0.20	0.40	<LOQ	Pass	Tebuconazole	0.20	0.40	<LOQ	Pass
Fipronil	0.20	0.40	<LOQ	Pass	Thiacloprid	0.10	0.20	<LOQ	Pass
Flonicamid	0.50	1.00	<LOQ	Pass	Thiamethoxam	0.10	0.20	<LOQ	Pass
Fludioxonil	0.20	0.40	<LOQ	Pass	Trifloxystrobin	0.10	0.20	<LOQ	Pass
Hexythiazox	0.50	1.00	<LOQ	Pass					

QC Batch ID: Pest-2020-05-22-01

Instrument: LC-MS/MS; Method: AOAC 2007.1-Mod; LOQ = Limit of Quantitation; The reported result is based on wet sample weight for that sample; Unless otherwise stated all quality control samples performed within specifications established by the Laboratory.Pesticide Analysis (Oregon Compliance Standard OAR 333-008-1190).

Ben Armstrong
QA Review

Confident Cannabis
All Rights Reserved
support@confidentcannabis.com
(866) 506-5866
www.confidentcannabis.com





Juniper Analytics LLC
1334 NE 2nd St
Bend, OR
(541) 382-3796
<http://www.juniperanalyticsllc.com>
ORELAP: License # 10035537931

Pangaea Organics LLC

La Pine, OR 97739
(541) 213-8824
Lic. #030-1003665D56A



Sample: 20JA0875.01

Concentrate/Extract - Full Compliance Post
Control Study - CAN, PES-R, SOL-R,
Concentrate/Extract Terpenes - TER

Report Date: 5/27/2020
Intake Date: 05/22/2020
Harvest/Prod. Date: 05/14/2020
Solvents Analysis Date: 05/27/2020

Citrus ICE

Strain: Citrus ICE

METRC Sample: 1A40103000163DD000006370; METRC Batch #: 6369;

External Batch #: 6369; Analytical Batch #: RS-2020-05-22-01

Residual Solvents

Pass

Analyte	LOQ	Limit	Results	RPD	Analyte	LOQ	Limit	Results	RPD
	PPM	PPM	PPM			PPM	PPM	PPM	
1,4-Dioxane	100	380.00	<LOQ	-	Toluene	100	890.00	<LOQ	-
2-Butanol	500	5000.00	<LOQ	-	Pentanes	500	5000.00	<LOQ	-
2-Ethoxy-Ethanol	100	160.00	<LOQ	-	n-Pentane			<LOQ	-
2-Propanol IPA	500	5000.00	<LOQ	-	Isopentane			<LOQ	-
Acetone	500	5000.00	<LOQ	-	Neopentane			<LOQ	-
Acetonitrile	100	410.00	<LOQ	-	Butanes	500	5000.00	<LOQ	-
Benzene	1	2.00	<LOQ	-	n-Butane			<LOQ	-
Cumene	50	70.00	<LOQ	-	Isobutane			<LOQ	-
Cyclohexane	500	3880.00	<LOQ	-	Hexanes	50	290.00	<LOQ	-
Dichloromethane	100	600.00	<LOQ	-	n-Hexane			<LOQ	-
Ethyl-Acetate	500	5000.00	<LOQ	-	2-Methyl-Pentane			<LOQ	-
Ethyl-Ether	500	5000.00	<LOQ	-	3-Methyl-Pentane			<LOQ	-
Ethylene Glycol	400	620.00	<LOQ	-	2,2-Dimethyl-Butane			<LOQ	-
Ethylene Oxide	20	50.00	<LOQ	-	2,3-Dimethyl-Butane			<LOQ	-
Heptane	500	5000.00	<LOQ	-	Xylenes	300	2170.00	<LOQ	-
Isopropyl-Acetate	500	5000.00	<LOQ	-	m-Xylene			<LOQ	-
Methanol	500	3000.00	<LOQ	-	o-Xylene			<LOQ	-
Propane	500	5000.00	<LOQ	-	p-Xylene			<LOQ	-
Tetrahydrofuran	100	720.00	<LOQ	-	Ethyl-Benzene			<LOQ	-

METRC RPD Status: N/A

Tentatively Identified Compounds: Peak 1: Hit 1: Acetic acid; Peak 2: Hit 1: 4-methylheptane

QC Batch ID: RS-2020-05-22-01

Instrument: GC/MS; Method: USP 467 - Modified; LOQ = Limit of Quantitation; The reported result is based on wet sample weight for that sample; Unless otherwise stated all quality control samples performed within specifications established by the Laboratory. Residual Solvent Analysis (Oregon Compliance Standard OAR 333-007-0410).

Ben Armstrong
QA Review

Confident Cannabis
All Rights Reserved
support@confidentcannabis.com
(866) 506-5866
www.confidentcannabis.com

